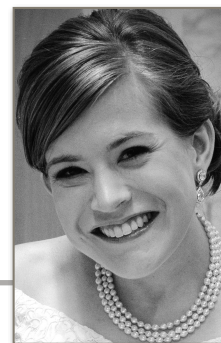


# MONICA ISRAEL SPENCE

## SOPRANO



### ROLES

Pamina	<i>Die Zauberflöte</i>	Amalfi Coast Music Festival	2015
Isabel	<i>Pirates of Penzance</i>	George Mason University	2015
Chorus	<i>Castor et Pollux</i>	Opera Theatre of Yale College	2013
Jo	<i>Little Women</i>	Catholic University of America	2011
Sister Dolcina	<i>Suor Angelica</i>	Catholic University of America	2011
First Spirit	<i>Die Zauberflöte</i>	Catholic University of America	2010

### CONCERT WORK

Recital	Bach <i>Jesu, der du meine Seele</i>	George Mason University	2016
Recital	Haydn <i>Creation</i>	George Mason University	2015
Soloist	Vivaldi <i>Gloria</i>	George Mason University	2014
Soloist	Haydn <i>Gloria</i>	University Church at Yale	2013
Soloist	Erlebach <i>Siehe, ich verkündige euch grosse Freude</i>	Catholic University of America	2011

### VOICE TEACHERS

Fabiana Bravo

Patricia Miller

Sharon Christman

### COACHES

Henriette Lund

Joseph Walsh

Katerina Souvorova

### CONDUCTORS

Sir Gilbert Levine

Helmuth Rilling

Erwin Ortner

### STAGE DIRECTORS

Jay Brock

Greg Ganakas

Gene Galvin

### AWARDS AND MASTERCLASSES

VA-NATS Honors and Third Place in Classical, Honors in Musical Theater	2015
George Mason University Provost Scholarship	2014
NALS Masterclass with Thomas Colohan and Joseph Walsh	2014
Festival 500 Masterclass with David Pomeroy	2013
Royal Bank of Canada Emerging Artist Award	2013
Benjamin T. Rome School of Music Academic Achievement Award	2012
Benjamin T. Rome School of Music Distinguished Service Award	2012

### EDUCATION

GEORGE MASON UNIVERSITY

Master of Music, Vocal Performance, *summa cum laude*, 2015

CATHOLIC UNIVERSITY OF AMERICA

Bachelor of Music, Vocal Performance, *summa cum laude*, 2012

## SPECIAL SKILLS

Ten years violin study, two years piano study, two years ballet, semi-fluent Spanish, proficient Italian and German

## CHORAL EXPERIENCE

DALLAS BACH SOCIETY	2018-PRESENT
DALLAS SYMPHONY CHORUS	2017-PRESENT
RECITAL CHORUS	CATHOLIC UNIVERSITY, INSTITUTE OF SACRED MUSIC, 2016
UNIVERSITY SINGERS	GEORGE MASON UNIVERSITY, 2014
YALE CAMERATA	YALE INSTITUTE OF SACRED MUSIC, 2012-2014
BATTELL CHAPEL CHOIR	UNIVERSITY CHURCH AT YALE, 2012-2014
DWIGHT CHAPEL CHOIR	EPISCOPAL CHURCH AT YALE, 2013-2014
RECITAL CHORUS	YALE INSTITUTE OF SACRED MUSIC, 2012-2013
REPERTORY CHORUS	YALE INSTITUTE OF SACRED MUSIC, 2013
UNIVERSITY SINGERS	CATHOLIC UNIVERSITY, 2009-2012
WOMEN'S CHORUS	CATHOLIC UNIVERSITY, 2009